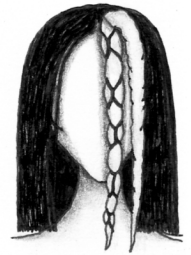
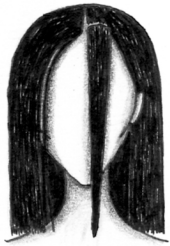


Double Ended Dreads From Amalthea's Attic

In order to insert double ended dreads, you need to know how to do a basic 3-way braid. Get yourself a pointy-ended comb (for easy sectioning) and a few mirrors (to help you see if you're going at it alone).

We've used a contrasting color dread to help illustrate better the technique - but remember, if you order double ended dreads that match your hair color, the braid is much less obvious.



Take a section of hair anywhere from 1/2" to 1" square. Place the middle of the double ended dread in between the two halves of the section and crisscross the two halves securing the double ended dread as close to the scalp as possible. The closer to the scalp, the longer you can wear your double ended dreads.

Divide the section of hair in half, and place the double ended dread in the middle. Try to clip down the surrounding hair to make sure it doesn't get in the way.

Take the two sections of the hair and one half of the double ended dread and braid them together (the two sections of hair and the one half of the dread being the 3rd section of the braid). Continue to the end of the hair (not the dread) and secure with a small elastic. Continue the steps until your entire head of hair is braided into double ended dreads. It will be very full and the look can last upwards of two weeks.

The braid will be much more discreet if you use a dread color similar to your own (note that your dreads will be thinner and more realistic.) You will see that the dark colored dread mixed with the braid is almost indistinguishable.

